

Connecting You to the Future of Shipping. Discover, Engage, Inspire!

# NEWSLETTER

Dear All,

As we approach the close of another incredible year, I am deeply proud and grateful for all that we have accomplished together. Capeline's success reflects the unwavering dedication of our team, the trust of our valued clients, and the steadfast support of our partners and stakeholders.

Internally, our team has demonstrated remarkable resilience, innovation, and collaboration, navigating challenges with creativity and determination. From delivering groundbreaking solutions to exceeding our performance goals, your commitment has been nothing short of inspiring. To every member of the Capeline family: thank you for embodying the values that define our organization and drive our continued success.

Externally, I want to express my heartfelt appreciation to our clients and partners for your trust and collaboration. Your engagement and feedback have been vital in shaping our growth and fueling our drive for continuous improvement. This year, we celebrated key milestones, including forging new partnerships with principals and operators, expanding our service footprint, and enhancing our liner division fleet—achievements that reflect our role as "the connecting carrier" in bridging businesses, people, and opportunities.

As we look ahead, our focus remains on delivering exceptional value, fostering meaningful relationships, and leading with clarity and purpose. True to our identity as "the connecting carrier," we aim to continue building bridges that connect markets, empower communities, and drive shared success. The future holds immense opportunities, and we are excited to embark on this next chapter with you by our side.

Thank you for being an integral part of Capeline's journey. Together, let us look forward to continued growth, shared success, and a future brimming with new possibilities.

**Vinith Vijayakumar**

Director

current market>>>

## INDUSTRY INSIGHT

### Expert Insights on Navigating the Future: Sustainability, Technology, & Resilience in Global Shipping and Logistics

The world of shipping and logistics is always changing. The past four years, from the Covid pandemic to the economic recovery and supply chain crisis that followed it, have shown that the global supply chain is prone to disruption but also innovation to sustainability



Mr. Ramesh Kumar K  
Vice President- International Marketing  
Al-Rashed International Shipping Co. K.S.C.C

#### Sustainability Initiatives:

Sustainability and greener business practices have been discussed for years. But with frequent and costly natural disasters becoming the norm amid a changing climate, the shipping and logistics industry has started to step up and take bold steps. There was a growing emphasis on sustainability, with more companies adopting eco-friendly practices and technologies. This included the use of recycled packaging materials, energy-efficient equipment, and environmentally certified vessels. There have been regulations implemented by global shipping regulators such as the International Maritime Organization's "IMO 2020" rule, requiring cleaner fuel and retrofitted emissions scrubbers installed on older vessels.

#### Decarbonizing the maritime industry:

- Investigating maritime community perceptions of ammonia as a marine fuel.

#### Technology Advancements:

Although digitalization in shipping has been talked about for a long time, by next year, it will finally be a reality for many shippers. The bottom line is that the Covid pandemic and transition to remote work forced the shipping and logistics industry to digitalize. Big shipping players such as Maersk, MSC, Hapag-Lloyd and others digitized. Boutique shipping companies also digitalized, and in many cases, they implemented their own software systems and tools for their customers. Artificial intelligence (AI) and blockchain technology could further digitalize and automate the world of shipping. Introduction of paperless shipping while many of Global Freight Forwarders are following suit, as digital platforms take a greater role in shipping. It is expected that developments in those areas will improve real-time shipment tracking and supply chain visibility to build on the software that has already been deployed in the industry. Introduction of paperless shipping. Many of Global Freight Forwarders are following suit, as digital platforms take a greater role in shipping. As the shipping and logistics world digitizes, cybersecurity is becoming more important than ever. In 2024, it is likely that the shipping industry at-large, as well as related partners, will invest heavily in cybersecurity. Industry is likely to invest heavily in cybersecurity to protect sensitive data, safeguard cargo from theft and prevent cyberattacks that threaten operations. Multifactor authentication will continue to become the norm in shipping and logistics, as it has in other industries.

The article continues on page: 8



# WHAT IS A BILL OF LADING IN SHIPPING?

A Bill of Lading is a legal document provided by a carrier to the shipper. It lists what goods are being shipped, the shipment's origin and destination, and includes information about the shipper, carrier, and recipient. The document is important because it serves as a legal document that gives the holder ownership of the cargo. It also acts as proof of the shipping agreement, outlining the carrier's responsibilities and the terms agreed upon for transporting the cargo.

## Main three functions of Bill of Lading:

- ✚ Proof of a contract of carriage
- ✚ Acknowledgement of received goods i.e. a confirmation that the carrier has received the goods
- ✚ A document that proves legal ownership of the goods.



more related on next issue>>>



## ANNUAL DAY CELEBRATION

2024 marked the 6th anniversary of CAPELINE, celebrated in grand style! The entire Dubai team gathered at the Royal M Hotel in Fujairah for a memorable event. The celebration featured staff cultural performances and the award ceremony for the 2024 CAPE PREMIER LEAGUE, the company's internal sports event of the year. The evening was filled with music, dance, and laughter, creating unforgettable memories for the team until next year's celebration!



UAE

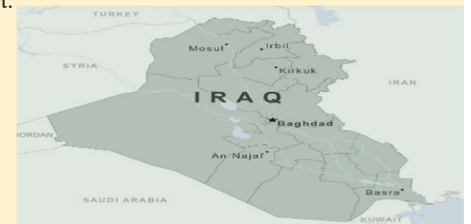
## EXHIBITION!

"HIGHLIGHTS FROM  
OUR PARTICIPATION  
IN THE GLOBAL  
FREIGHT SUMMIT...!"

## "Eager to Know About Seasonal Products? Explore Now!"

Iraq, a Middle Eastern country known as the cradle of civilization, has a rich history rooted in ancient Mesopotamia along the Tigris and Euphrates rivers. Its capital, Baghdad, was a major cultural and intellectual hub during the Islamic Golden Age. Today, Iraq is notable for its vast oil reserves that fuel its economy and its diverse landscape, from fertile plains to deserts and mountains. Despite challenges, Iraq's resilient population maintains vibrant traditions in art, literature, and cuisine, often showcasing local produce like dates and citrus. As Iraq works toward stability and restoration, it continues to be a nation of cultural and historical significance.

- ✓ **Spring:** As temperatures begin to rise, Iraq sees a fresh harvest of citrus fruits like oranges, lemons, and grapefruits. Vegetables such as cucumbers, lettuce, tomatoes, and onions are also in abundance, while date palms start to blossom, setting the stage for the summer date season.
- ✓ **Summer:** Iraq's famous date palms reach peak harvest, particularly the popular Zahidi and Khastawi varieties. Watermelons and melons offer refreshing relief from the summer heat, while figs, pomegranates, and okra are also in season, enriching local markets and cuisine.
- ✓ **Fall:** The fall brings in grapes, which are often dried into raisins, and fruits like apples and pears from the cooler regions. Late-season dates are still available, along with eggplant and squash, commonly used in traditional dishes.
- ✓ **Winter:** In the cooler months, citrus fruits like oranges and mandarins reach their peak. Green leafy vegetables such as spinach and chard thrive, as well as root vegetables like carrots and turnips. Barley and wheat, planted earlier, also play an important role in winter agriculture, serving as staples in the Iraqi diet.





# UNDERSTANDING MANDATORY OPERATIONAL MARKINGS

## ✓ MAXIMUM GROSS & TARE MASS

Gross weight represents the total maximum weight of a fully loaded container, while tare weight refers to the weight of the empty container. In this example, the maximum gross weight is 32,500 kg (71,650 lbs.), and the tare weight is 3,660 kg (8,070 lbs.).

## ✓ NET WEIGHT

Net weight, also known as payload, is calculated by subtracting the tare weight from the gross weight. It represents the maximum load that can be placed in the container. In this example, the net weight is 28,840 kg (63,580 lbs.).

## ✓ MAXIMUM CARGO VOLUME

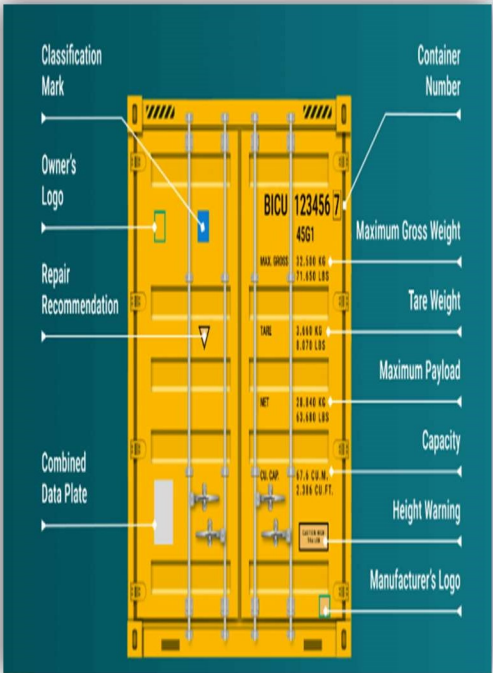
The marking is labeled as CU. CAP, which stands for "cubic capacity," indicates the maximum volume of cargo that can be loaded into the container. This measurement is provided because cargo is typically assessed by volume before weight. In this example, the container's cargo volume is 67.6 cubic meters (2,386 cubic feet).

## ✓ HEIGHT MARKS FOR CONTAINERS

Containers taller than 2.6 meters (8 feet 6 inches) display a height warning. Height markings appear in two locations: on the top edge of each side and below the container's identification number.

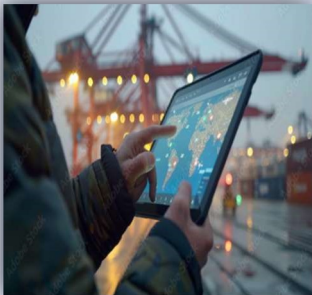
## ✓ LOGOS

Some containers, as shown in the image above, also display various logos, which might include a manufacturer's logo, an owner's logo, or a repair recommendation logo. While ISO does not set specific standards for the durability of operational markings, it is recommended that these markings remain intact for the entire lifespan of the container.



## Ask questions>>>

*What is the role of the container number in shipment tracking?*



The container number is essential for tracking shipments, enabling easy monitoring of container movement and status. Previously, tracking container was complex, particularly once they were in transit, but modern systems now allow you to track them easily by entering the container or bill of lading number on a website for real-time updates. While this process usually requires re-entering the number for each update, services like xchange tracking simplify it by storing the information after a single entry and providing automatic updates, making it more efficient to keep track of shipments.

*more related on next volume>>>*



## THE BIG 5 DUBAI EXPO

26- 29 NOVEMBER, 2024  
DUBAI, UAE

## UPCOMING EVENTS



KoINDEX 2024  
21- 23 NOVEMBER 2024  
NEW DELHI, INDIA



## GUESS WHAT?

Oman, located on the southeastern coast of the Arabian Peninsula, is known for its rich heritage, diverse climate, & unique blend of Arabian & coastal culture. The country's seasonal products are especially charming: winter brings an array of sweet dates, while summer in the Salalah region yields tropical fruits thanks to the Khareef monsoon. Oman is also famous for frankincense, a fragrant resin from the Boswellia tree in Dhofar, valued for its aromatic and medicinal qualities!

*more on these seasonal treasures in our next edition>>>*

# NEWSHEADS



## "JNPA Sets New Record for Monthly Container Throughput"

India's JNPA port continues its upward momentum, achieving a 13.12% growth in container traffic, reaching 4.14 million TEUs, and a 5.59% increase in total cargo throughput, totalling 49.64 million tons between April and October 2024, compared to the same period in 2023. The port set a new monthly record in October 2024 by handling 614,651 TEUs, an 11.86% rise from October 2023's 549,487 TEUs.

APMT's Gateway Terminals India (GTI) emerged as the fastest-growing container terminal within JNPA during this period, processing 1.17 million TEUs—an impressive 46% surge compared to the same timeframe in 2023.

### WHAT'S NEW

TAKE A LOOK INSIDE

**SPECIALTY OF FLAT  
RACK CONTAINER!**

RELATED ON PG:3

**DP WORLD  
EXPANDS**  
Related On Pg:4



# "Panama Canal Eyes Rio Indio Project to Combat Future Droughts and Secure Water Supply"

**INSIDE THIS EDITION**

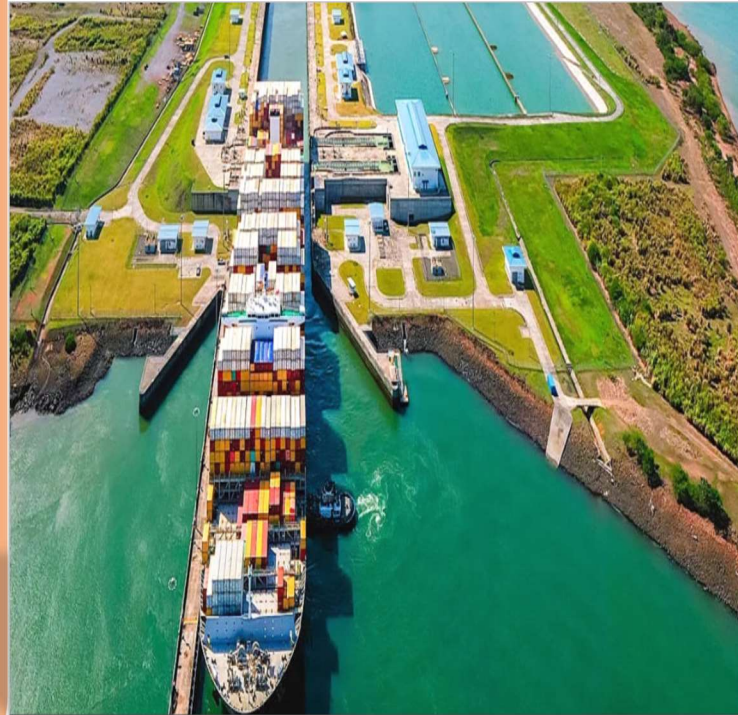
**INCOTERM: FAS**

**DIVE IN**

**PG NO: 5**

The Panama Canal Authority (ACP) is exploring innovative solutions to prevent future disruptions caused by droughts, following a historic dry spell that has affected operations for over a year. During a roundtable marking the canal's 110th anniversary, ACP Administrator Ricaurte Vásquez emphasized the waterway's resilience and adaptability in addressing climate-related challenges. Highlighting the canal's global significance—connecting 180 maritime routes to 1,920 ports across 170 countries and facilitating nearly 3% of global trade—Vásquez underscored the need for forward-thinking strategies to sustain its critical role in international commerce.

Vásquez also stressed the importance of adopting a more customer-focused approach, moving away from traditional practices where the canal unilaterally set policies and prices. By engaging with stakeholders and offering flexible solutions, the ACP aims to ensure mutual success for both the canal and its users. Employing over 8,500 people, the canal continues to serve as a vital link for major trade routes, including those between the U.S. East Coast and Asia, as well as Europe and South America.



## “Al Seer Marine and Damen Launch Joint Venture to Revolutionize Commercial Shipbuilding”

**ABU DHABI:** Al Seer Marine, a subsidiary of International Holding Company (IHC) listed on the ADX, and the Dutch shipbuilder Damen, have announced plans to build over 26 vessels in the UAE next year for both domestic and international clients. Their joint venture, Dune, initially focused on naval shipbuilding since its 2022 inception, will now expand into commercial shipbuilding, utilizing Al Seer Marine's Abu Dhabi facility alongside Albwardy Damen's shipyards in Sharjah, Fujairah, and Dubai. Annelies Damen, board member of Damen International, emphasized that Dune aims to deliver innovative and efficient maritime solutions by combining advanced UAE-based manufacturing capabilities with Damen's regional shipyards. Dune's services include shipbuilding, project management, and sales and acquisitions of both commercial and naval vessels.

# “DP World Boosts Operational Safety and Efficiency with New Fleet Featuring Advanced ESC Technology”



DP World has launched a new fleet of prime movers equipped with advanced safety technologies, including Electronic Stability Control (ESC) and a Tail Guarding System, to enhance operational safety and efficiency. This industry-first initiative underscores DP World's commitment to leveraging cutting-edge technology to improve road safety for its drivers, even in challenging conditions. The ESC system ensures greater stability, especially when transporting high-risk cargo, while the Tail Guarding System helps prevent reverse collisions by eliminating blind spots. Additionally, the fleet includes Hill-Start Assist and Automatic Traction Control to further safeguard drivers and cargo. Ravinder Johal, Chief Operating Officer at DP World, emphasized that these upgrades align with the government's vision for improved road safety and demonstrate the company's dedication to operational excellence and the welfare of its staff. Through these innovations, DP World is setting new standards for safety across the logistics industry.

## LITTLE-KNOWN FACT

### FLAT RACK CONTAINERS

A flat rack container is a specialized shipping container designed for transporting oversized or heavy cargo that cannot fit into a standard container due to its dimensions. Unlike typical containers, a flat rack has collapsible or fixed-end walls on the shorter sides but no walls on the longer sides, allowing for cargo that extends beyond the container's width. This makes it ideal for carrying large machinery, vehicle's, construction materials or industrial equipment. The container is constructed from high-strength steel to withstand heavy loads and it often includes lashing points to fasten and stabilize the cargo securely during transit. Flat rack containers come in 20-foot and 40-foot lengths, providing flexibility for different types of freight. The absence of side walls and a roof makes loading and unloading easier, particularly with the use of cranes or forklifts. Flat racks are commonly used in industries like construction, manufacturing, and shipping, where large or bulky items need to be transported safely across long distance.





## “SLPA REAFFIRMS COMMITMENT TO ADANI GROUP’S COLOMBO TERMINAL PROJECT”

The Sri Lanka Ports Authority (SLPA) has reaffirmed its commitment to the Adani Port and Special Economic Zone’s Colombo West International Terminal project, emphasizing no plans to reassess or terminate the agreement. SLPA Chairman Admiral Sirimewan Ranasinghe (Retd) highlighted the project's significance as a \$1 billion investment, marking the largest foreign direct investment in Sri Lanka's port sector. This statement follows Adani Group’s clarification that neither its Chairman Gautam Adani nor key executives face bribery charges under the US Foreign Corrupt Practices Act (FCPA), as recent US Department of Justice filings did not name the group or its associates. Adani Group has strongly denied all allegations and intends to pursue legal recourse to defend itself.

The Adani Group has also received strong backing from its global partners. Abu Dhabi’s International Holding Company (IHC) reaffirmed its support, expressing continued confidence in its investment outlook. Similarly, the Tanzanian government confirmed its commitment to agreements with Adani Ports, stating that all ongoing projects, including the recently finalized 30-year concession for Container Terminal 2 at Dar es Salaam port, fully comply with domestic laws. These endorsements underscore the Adani Group's stability amid recent scrutiny and highlight its pivotal role in advancing international port infrastructure.



## “DP World acquires silk logistics to expand Australian operations”



Dubai-based DP World has agreed to acquire Silk Logistics, a leading Australian provider of port-to-door logistics services, in a deal valued at approximately A\$174.5 million (USD \$115.6 million) or A\$2.14 per share. This acquisition, pending Silk Logistics shareholder approval and standard closing conditions, marks DP World's commitment to enhancing its logistics network within Australia.

Silk Logistics operates 21 logistics hubs and 25 warehouses across five states and will become part of DP World Australia, which already manages container terminals and parks in Brisbane, Sydney, Melbourne, and Fremantle, along with inland distribution centers and warehouses. Sultan Ahmed bin Sulayem, DP World’s Group Chairman and CEO, highlighted that the acquisition will significantly strengthen DP World’s integrated logistics capabilities and broaden its service offerings across the region.

# “SAFEEN UNVEILS GROUNDBREAKING UNMANNED OFFSHORE VESSEL”



Safeen Subsea, a subsidiary of AD Ports Group, has launched Safeen Green, an innovative remotely operated unmanned vessel (USV) designed to revolutionize marine surveys and inspections. Capable of operating up to 200 nautical miles offshore, Safeen Green collects geophysical and hydrographic data with minimal environmental impact. The vessel is controlled from an onshore Remote Operation Centre (ROC), and operates on renewable electric power or biofuel, reducing emissions to just 10% of a traditional vessel. Its unmanned operation enhances safety by removing personnel from potential risks, while dual autopilots, HD cameras, and advanced monitoring systems ensure greater efficiency and reliability.

Tareq Abdulla Al Marzooqi, CEO of Safeen Subsea, highlighted that Safeen Green is set to be a game-changer for offshore EPC projects, offering operational independence and versatility across various industries. Having undergone rigorous trials in the North Sea, the vessel is now ready for deployment in the UAE. Its modular payload options, fuel efficiency, and adaptability make it an ideal solution for sectors such as oil and gas, wind farms, and deep-sea minerals, promising both cost savings and improved performance.

## CURIOUS TO KNOW



FAS stands for ‘Free Alongside Ship’, wherein the place/port of destination plays a major role. In FAS, the seller has well-defined instructions for the course of transportation till the port of destination and the buyer seizes responsibility for loading the goods -- and all charges -- after the goods reach the nominated port.

In practice, the FAS incoterm is restricted to sea and inland water transit, fairly suitable for bulk and non-containerized cargoes. However, for containerized goods, FCA is a more conducive term.

## Industry Insights

CONTINUES FROM PAGE :1



### Geopolitical Complexity:

The global economic slowdown continued to impact the region, with GDP growth projections being revised down. This affected industrial production and retail sales forecasts, leading to cautious spending and investment. Conflicts in the Middle East have further affected the shipping industry, pressuring international companies to issue advisories and adjust their operations. The consequent challenges posed to key shipping routes, including the Suez Canal and the Strait of Hormuz, add further uncertainty to the industry in 2024. Cargo travel distances have increased by an average of nine per cent, due to vessels needing to go around Africa via the Cape of Good Hope to avoid the Red Sea route. This has resulted in a rise in transit times, as well as more ships being required to transport the same amount of cargo, causing the number of vessels being available to transport cargo to reduce considerably while this also result with carriers and businesses are subjected to increased costs. These costs are to cover the additional time, fuel and resources required to complete an extended journey. The conflict in Ukraine, leading to the closure of Black Sea ports and causing congestion and delays in goods transportation, has been particularly impactful, substantial decline in Ukraine’s exports, especially grains and food products, has contributed to global price hikes. Trade tensions between the US and China, rising labour costs, and concerns about potential future manufacturing disruptions, similar to those experienced during the COVID-19 pandemic, companies, particularly in the technology sector, are increasingly seeking to diversify their global supply chain operations away from China.



While entirely disengaging from China is challenging due to the robust electronic supply chains the country has successfully developed over the past three decades, companies' strategic moves to relocate their final manufacturing and assembly processes outside of China, while still relying on Chinese suppliers for essential raw materials are on the rise. Moreover, establishing a manufacturing presence in a new geography is a gradual process, typically requiring more than two years. The expansion of BRICS, now including the UAE, Saudi Arabia, Iran, Ethiopia, Egypt, and Argentina, is expected to introduce major shifts in international trade routes, as well as present new alternative payment systems, and support infrastructure development across the region. Nevertheless, the outcome hinges on how BRICS will leverage its expanded influence in the evolving global landscape, presenting both opportunities and challenges for the shipping sector. This cooperation, coupled with other recent developments within the region, including the inception of the India-Middle East-Europe Economic Corridor (IMEC) is set to reshape the global shipping dynamics.

#### **Global Shipping & Logistics Crisis of 2024**

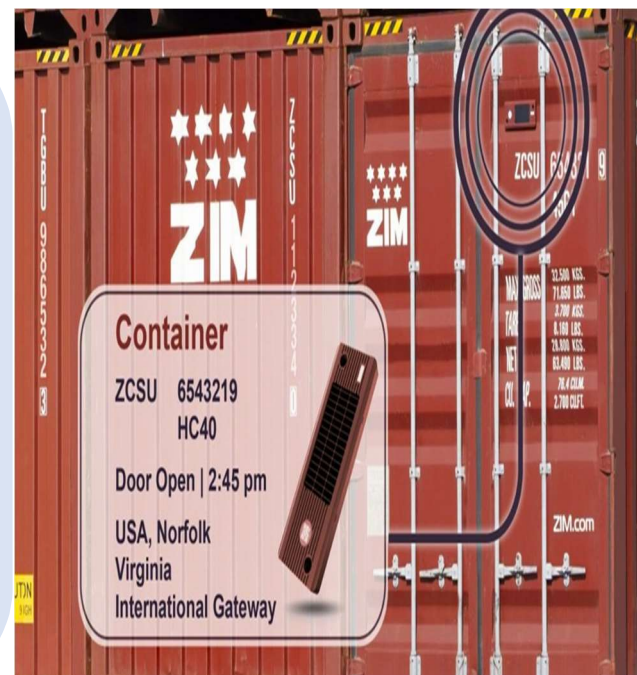
- Port Congestion and Infrastructure Bottlenecks
- Container Shortages and Imbalances
- Supply Chain Disruptions and Resilience
- Cost Pressures resulting rising freight levels
- Regulatory Changes and Compliance Challenges

#### **Supply Chain Resilience**

The Covid pandemic exposed vulnerabilities in global supply chains. In response, companies are rethinking their supply chain strategies to enhance resilience and implement risk management. This includes diversifying suppliers, changing how goods are sourced and, for some companies, just having a plan. Analytics is becoming even more important and will play a big role in identifying potential risks and associated responses. In summary, Global shipping and logistics during 2024 had been complex which needed smart planning, strong system, close working with supply chain using technology on improvements, sustainability and risk factors. Focusing on being flexible and handle risk well, lead to succeed in a changing global shipping world.

## **"ZIM Fast-Tracks Rollout of 'Smart' Containers to Revolutionize Shipping"**

ZIM Integrated Shipping Services is revolutionizing cargo tracking with the global rollout of Hoopo's innovative hoopoSense Solar trackers for its smart containers. These advanced trackers, designed with a battery life exceeding 12 years to match a container's lifecycle, enable seamless end-to-end shipment monitoring, including inland transportation. ZIM President and CEO Eli Glickman highlighted the transformative impact of this technology, providing customers with real-time data for enhanced supply chain decision-making and risk management. Featuring integrated door sensors, the solution sets a new standard for tracking visibility, reinforcing ZIM's leadership in technology and innovation while delivering reliable, cost-effective services for its customers.



Reach Us: [www.capeship.com](http://www.capeship.com)